

## Electric Drive Conversion



- Top Shroud Chain Hoist Tackle Block Decorative
- Top Shroud Electric Drive
- Wobble Switch Relay Up Stop Down Directional Switching Enclosure
- Dayton GearHead** Electric Motor Hardened Steel Gear Transmission
- Complete Removable 2 Bolt Mounted Brackets  
Removable for Manual Operation Emergency Spinner Handle
- Limit Switch Connection Coloured Wire Split Black Plastic Cover
- Standard **Yellow** Male 3 Prong Plug
- Wet Locations Covered Power Outlet 120 V.A.C. Ground Fault
- Teck Cable** Power 120 V.A.C. Supply Panel

Plug the Unit power cord into covered outlet.

Move the wobble switch & hold in the 'Down' position to lower the lift.

**Release the wobble switch lever to 'Stop', every 30 seconds to allow for hoist to cool, in the down direction only.**

Move the wobble switch & hold in the 'Up' position to raise the lift.

**Cooling is not required while raising the lift.**

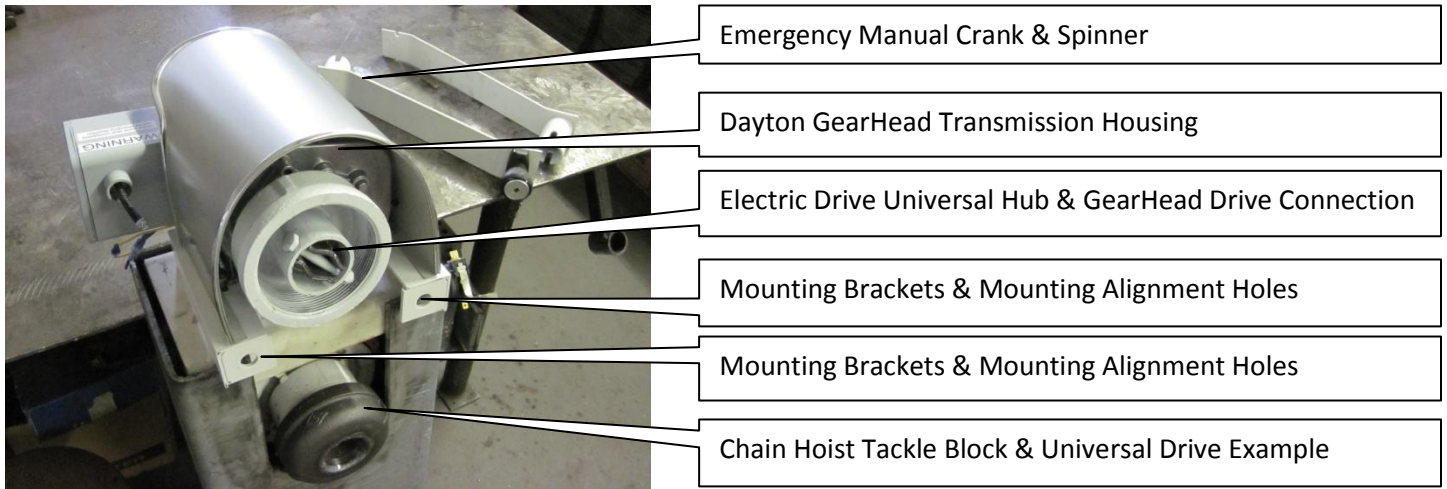
Unplug the Unit power cord to rest beneath the protective shroud.



- Protective Shroud
- Electric Drive GearHead Motor
- Up Relay & Down Relay Enclosure Labelled 'Up' 'Stop' 'Down'
- Flexible Wobble Switch Plastic Tube
- Single Assembly Compilation  
Motor GearHead Transmission Shroud & Brackets

Electric drive conversion is deemed temporary and portable; as is an electric drill or vacuum cleaner.

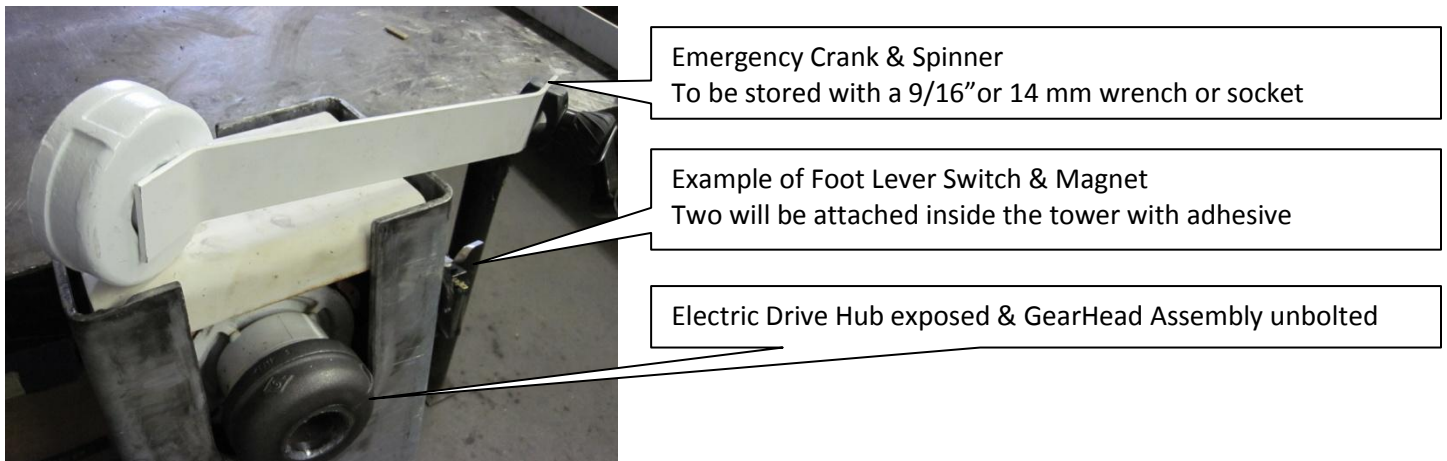
## Electric Drive Conversion



Wobble Switch design allows for flexible control.

Damage to the inside switch is minimized if any object impacts the unit.

For example, the switch will resist if a beach ball is kicked or a wet towel is thrown against the lever.



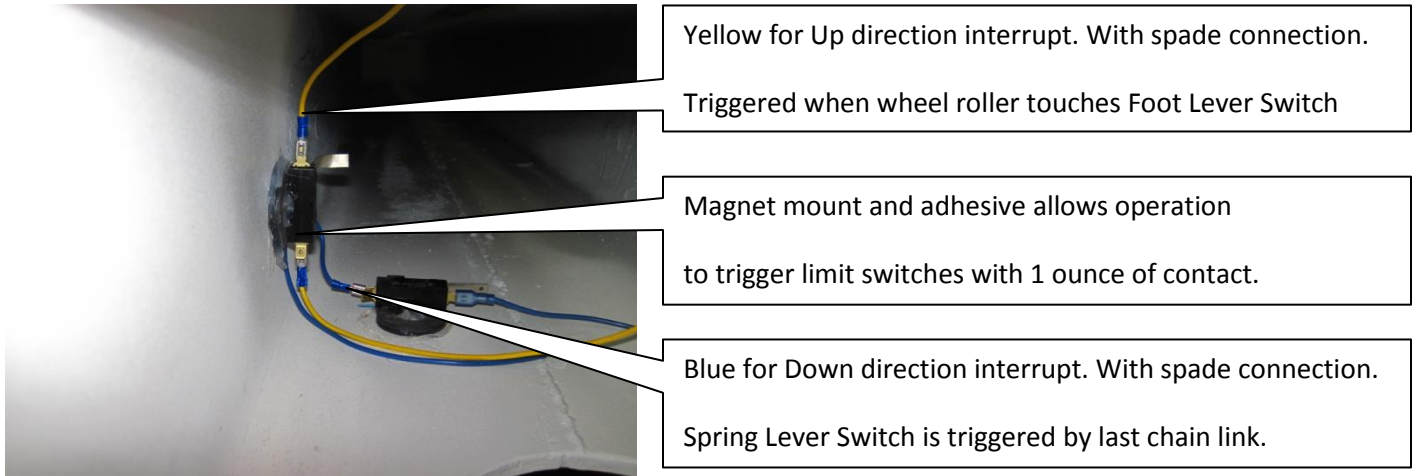
Emergency spinner handle supplied, used for manual operation.

# Electric Drive Conversion

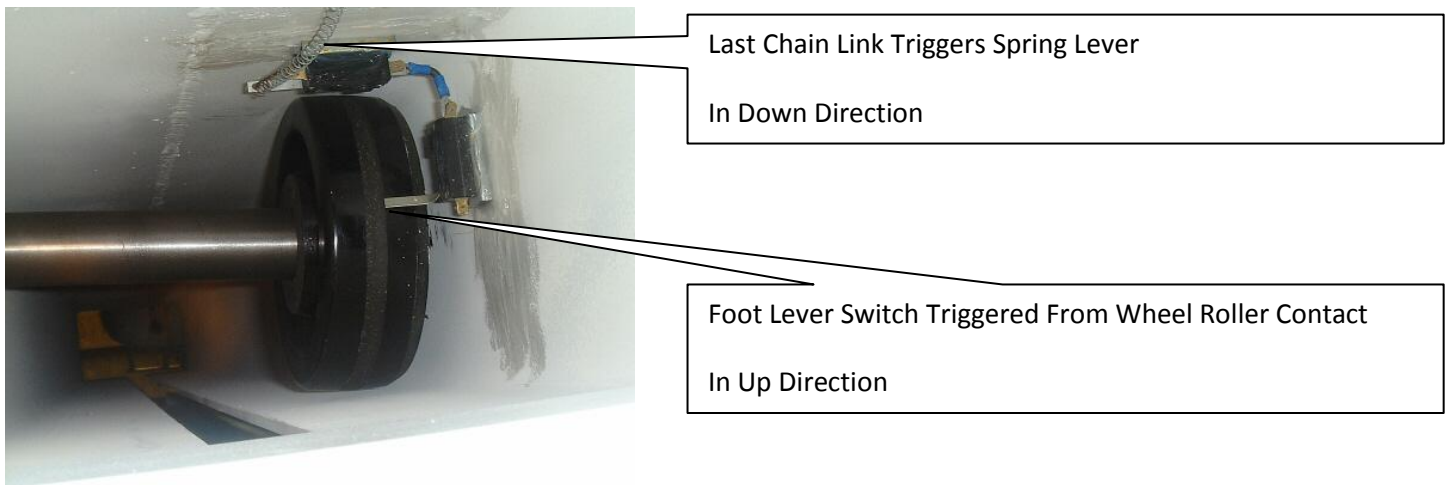
## Important Foot/Spring Lever Switches

When the lift reaches maximum height, a wheel roller inside the tower moves the lever of the upper limit switch.

The power is shut down to the electric drive and will stop in the up direction only.

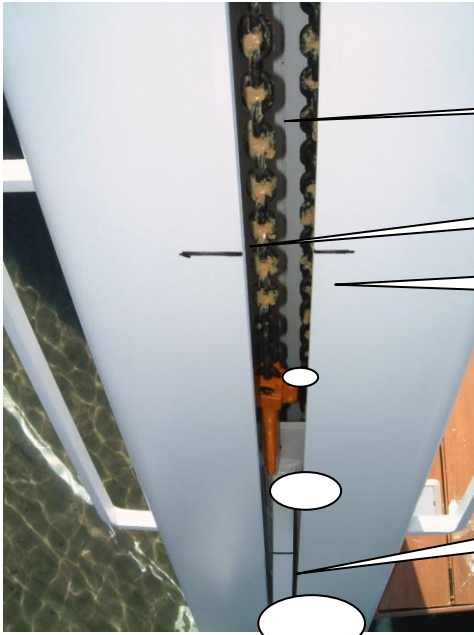


As the load chain is let out, the Spring Lever Switch interrupts power to the wobble switch. This is at the lowest point. Power is still active in the up direction.



As the load chain lifts, the Foot Lever Switch interrupts power to the wobble switch at the highest point. Power is still active in the down direction.

# Electric Drive Conversion



Visually Examine Chain Fall. Must Be Without Twist. **Must be 'taut' at all times, not slack.**

High Limit Mark. Expect Shut Off of Wobble Switch in the 'Up' position.

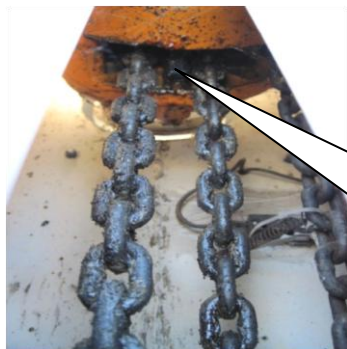


Visual Aid Mark for Lowering & High Limit

Foot Switch & Spring Lever Switch are in position.



Visual Inspection is a part of equipment operation. Look inside through the tower slot **to ensure lift chain is in alignment.**



Visual Inspection is a part of equipment operation. Look inside through the tower slot **to ensure Lever and Foot Switches are as in the photo.**

Chain Hoist Condition **Good**: 3 Chains Spaced 2 inches. **Very Important.** The photo shows normal condition.

# Leisure Boat Lift Electric Drive Conversion

---

## Important

Make sure to always let the Wobble switch return to the 'Stop' position by letting it rest.

Damage will occur while moving the Wobble Switch repeatedly, quickly or with out reason.

If the wobble switch is moved too quickly, the Electric Drive Motor continues its same rotation,  
lifting or letting the load move the same direction it was traveling.

This will ignore the safety of each directional limit and cause major damage.

Damage is repairable and costly.

Know your equipment.

Look at what the lifter is doing.

**Never Allow the Lift Chain to become loose or slack!**

When the power to the dock is unavailable, retrieve the emergency crank handle and 14mm socket or 9/16" wrench.  
Wiring is detachable on the outside of the tower. Female And Male Spade connections are used.

Unplug each electrical connection. They are:

- The big yellow plug.
- The 2 blue wire spade connections.
- The 2 yellow wire spade connections.

These are in the split ribbed black plastic covering.



28 Foot Pounds Torque  
12 amps 'Starting'  
5.2 amps full load 'Running'  
Dayton GearHead type, 120 V.A.C..  
Removable Single Bolt Mounted Brackets

Operation cost is \$0.32 per hour.

No User maintenance or lubrication points on electric drive motor.

Can be covered in winter months with a plastic utility bag.

1-800-661-2004